

Site Shade Co 25 and 28 Series Motor Programming

Please Read and Follow These Instructions.

Please use the motor programming instructions provided here. A copy of the AOK factory instructions are also provided for your reference.

Please read installation instructions and programming instructions completely prior to proceeding with installation and programming. Failure to do so can result in damage to the motor and or the shade.

Be prepared to stop the shade during programming. The shade will move continuously during some of the steps. You will need to be prepared to stop the motor using the remote control. Failure to stop the shade can result in shade or motor damage.

Only apply power to the motor being programmed regardless if the other motors have been programmed or not. This will prevent inadvertent interaction with other motors. This is not possible for motors with built-in batteries. Motors with built-in batteries must be put to sleep. Sleep mode prevents the motors from responding to the remote control.

We recommend mapping out the installation before proceeding. This will reduce set-up time and make life easier. Decide the channels and or additional remotes to be assigned to each shade in the installation. Each shade should be completely programmed before moving to the next. Have the necessary remotes and controls ready prior to proceeding.

All motors programmed to the same RF channel will operate at the same time. If you want individual control of the motor, you must use separate channels on multi-channel remotes or separate single channel remotes.

The remote controls are considered dummy devices as they do not store any motor or programming information. The motors are the intelligent devices. The motors store the shade operation limits in their memory and the motors also memorize the specific remotes or channels assigned to control them. Each motor can have up to 20 remote control channels controlling them.

Program Button Locations

Motor Head – The program button is on the flat part of the motor head. There is a status indicating LED under the button.

AC123 Remote Control (Handheld Remote with physical buttons) – The program button is located in a hole on the back of the remote control. Please use a large paper clip to press the button.

AC140 Remote Control (Handheld Touch Sensitive Remote) – Remove the battery cover from the back of the remote control. The program button is the button label as “Set”.

AC135 Remote Control (Wall Switch) – Remove the battery cover from the back of the remote control. The program button is located on the lower left in a hole and is labelled as “Learn”. Please use a large paper clip to press the button.

Sleep and Wake Built-in Battery RF Motors

The AM25 and AM28 motors have a switch on the motor head next to the USB charging port.

Setting the switch to the 0 (Off) position will put the motor to sleep.

Setting the switch to the 1 (On) position will put the motor to active mode.

The motor can be charged when the switch is in either position.

Programming a Motor

There is limited time to complete some programming steps. Please read ahead to make sure you are prepared.

Step 1 - Record a Channel to the Motor Memory. **A pause longer than 10 seconds** without activity will cause the motor to jog and you will need to start over.

1-A) Select the remote control and channel you want to use.

1-B) Press and Hold the “Program” button on the motor head until the motor jogs once. (app. 1 Sec.) A jog is a movement in both directions.

1-C) Within 10 seconds, Press the “Up” button on the selected remote control. The motor will jog once.

If the motor does not respond, proceed to “Resetting Motor...” and reset the motor. If working with a built-in battery motor, you might need to wake the motor first.

Step 2 - **DO NOT SKIP** - Check Motor Direction and Change if Necessary

2-A) Check the direction of operation (the motor will operate in momentary fashion). Confirm that the “Up” button brings the shade up and “Down” brings the shade down.

2-B) **Changing the direction (If needed)**, Press and Hold the “Stop” button until the motor jogs. (app. 5 Sec.) A jog is a movement in both directions. **A pause longer than 5 seconds** without activity will cause the motor to jog and you will need to start over.

2-C) Press the “Down” button. The motor will jog once.

2-D) Check the motor direction again.

Step 3 - Set Lower and Upper Shade Limits

This step can be performed in either order, but we prefer to start with the lower limit as this ensures the material is under proper tension. If you start at the top, the shade material may be tight or loose and operation may not be repeatable.

Important Note: You cannot start this procedure at the limit position. For instance, you cannot just do steps 3-A and 3-C if you are already at the limit to be recorded. You will need to move the shade for this procedure to work.

3-A) Press and Hold the “Program” button on the remote control until the motor jogs once. (app. 1 Sec.) A jog is a movement in both directions.

3-B) Move the shade to the desired lower limit position using the remote control. The shade will move in short movements with momentary button presses. A long press will result in the shade moving continuously. Be prepared to stop the shade using the remote control.

3-C) Press and Hold the “Program” button on the remote control until the motor jogs once. (app. 1 Sec.) A jog is a movement in both directions.

3-D) Move the shade to the desired upper limit position using the remote control. The shade will move in short movements with momentary button presses. A long press will result in the shade moving continuously. Be prepared to stop the shade using the remote control.

3-E) Press and Hold the “Program” button on the remote control until the motor jogs once. (app. 1 Sec.) A jog is a movement in both directions.

3-F) Press and Hold the “Program” button on the remote control until the motor jogs once. (app. 1 Sec.) A jog is a movement in both directions.

The basic shade motor programming is now complete. The shade will move automatically to the upper and lower limits with a momentary press of the buttons.

Program any additional intermediate positions and additional channels of control before moving to the next motor.

Adjusting the Stopping Points

A) Move the shade to its current stopping point.

B) Press and Hold the “Program” button on the remote control until the motor jogs once. (app. 1 Sec.) A jog is a movement in both directions.

C) Adjust to a new stopping point. Move the shade to the desired position using the remote control. The shade will move in short movements with momentary button presses. A long press will result in the shade moving continuously. Be prepared to stop the shade using the remote control.

D) Press and Hold the “Program” button on the remote control until the motor jogs once. (app. 1 Sec.) A jog is a movement in both directions.

Intermediate Stopping Positions

A total of 6 stopping positions can be programmed into the motor memory. 1 Upper, 1 Lower and up to 4 intermediates. The intermediate stopping points can be added or deleted at any time after initial programming.

Please note the remote controls do not have dedicated buttons to activate the intermediate positions. The motor will index (stop) to each stopping point while moving in either direction. You can bypass the intermediate positions by pressing the direction buttons on the remote control twice with a 1 second pause between presses.

A) Move the shade to the desired new limit position using the remote control.

B) Press and Hold the “Program” button on the remote control until the motor jogs once. (app. 1 Sec.) A jog is a movement in both directions.

C) Press and Hold the “Program” button on the remote control until the motor jogs once. (app. 1 Sec.) A jog is a movement in both directions.

Repeat A through C to program additional stopping points.

Deleting Stopping Points

The full upper and lower limit positions cannot be deleted. Only the intermediate stopping points can be deleted.

A) Move the shade to the stopping point that you want to delete.

B) Press and Hold the “Program” button on the remote control until the motor jogs twice. The first jog will happen quickly, and the second jog will be delayed. (app. 7 Sec.) A jog is a movement in both directions.

Adding Remote Controls or Channels

A pause longer than 10 seconds without activity will cause the motor to jog and you will need to start over.

A) Press and Hold the “Stop” button on current remote/channel that controls the motor until the motor jogs once. (app. 5 Sec.) A jog is a movement in both directions.

B) Select the new remote control or channel on the same remote control.

C) Press the “Up” button on the new remote/channel. The motor will jog once. The motor will now respond to all channels that have been added.

Deleting Remote Controls or Channels

A pause longer than 10 seconds without activity will cause the motor to jog and you will need to start over.

- A) Select the remote control/channel that you want to delete.
- B) Press and Hold the “Program” button on the motor head until the motor jogs once. (app. 1 Sec.) A jog is a movement in both directions.
- C) Press and Hold the “Program” button on the remote control until the motor jogs once. (app. 1 Sec.) A jog is a movement in both directions.

Resetting Motor Using the Motor Head

(Do not pause long between presses)

- A) Briefly Press the “Program” button on the motor, release when the LED flashes.
- B) Briefly Press the “Program” button on the motor, release when the LED flashes.
- C) Briefly Press the “Program” button on the motor for 3 seconds, release when the LED flashes twice. The first flash will be almost instant, and the second flash will be delayed.
- D) Press and Hold the “Program” button on the motor until the motor jogs twice.

Note: The motor should not jog during the first 4 steps. You are holding the button too long if it does and the motor will not reset.

Resetting Motor Using a Remote Control

Put any other motors using the same channel to sleep or they will be reset.

A pause longer than 10 seconds without activity will cause the motor to jog and you will need to start over.

- A) Select the remote control or channel that controls the motor.
- B) Press and Hold the “Stop” button on current remote/channel that controls the motor until the motor jogs once. (app. 5 Sec.) A jog is a movement in both directions.
- C) Press and Hold the “Program” button on the remote control for app. 7 seconds. The motor will jog once at 1 second and two more times at 7 seconds. A jog is a movement in both directions.

Blank Page

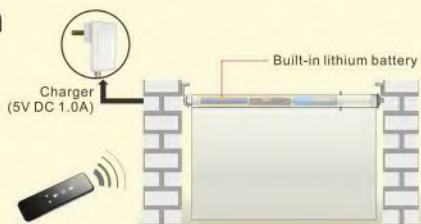
User Guide of Motor



I .Features

- Energy Saving Patent.
- Built-in Rechargeable Lithium Battery Pack.
- It has automatic correction function for the displacement generated by braking.
- The built-in control parts of motor are sealed well for better safety.
- It's easy to switch the mode between inching and interlock and control operation direction.
- Electronic limits setting,6 limits can be set (2 end limits and 4 middle limits).
- Short circuit protection & open circuit protection for sensor.

II .Application



It can be fully charged within 4 hours,
Please unplug the charger when fully charged.

III .Operation Instruction

1.Power ON/OFF * After switching off power, the motor will not be able to receive remote signals.

Power ON



Press and hold the PROG button for 1s until red light comes on

The motor is now ON

Power OFF



Press and hold the PROG button for 7s(The motor jogs once at 1st second)

The red light flashes 3 times, the motor is off

2.Programming Preparation * If there is no action in 10 seconds, the motor will exit programming automatically.

Method A



Press PROG button for 1s

Motor jogs once. The motor is now in setting mode

Method B



Press and hold STOP button on programmed remote for 5s

Motor jogs once. The motor is now in setting mode

3.Paring remote



Press UP button under paring mode

Motor jogs once, the motor and remote are now paired

4.Change Direction

Correction: FIRST - Press and Hold the Stop button first for 5 seconds until the motor jogs



Under the programming preparation, press the remote "DOWN" button

Motor jogs once, the motor direction is now reversed.

5.First limit position setting



Press PROG on the programmed remote for 1s

The motor jogs once, it is now in setting mode

The first limits can be Upper or lower limit, if press UP button, then Upper limit is first limit

If press DOWN button, then lower limit is first limit

Adjust the motor to the desired position, press STOP, then press PROG

Motor jogs once, the limit position is saved

6.Other limit position setting

* If there's no any action within 30's,the motor will exit from limit position preparation automatically



Adjust the motor to desired position, press STOP, then press PROG for 1s

The motor jogs once, it gets into setting mode

Press PROG button again

The motor jogs once again, the limit position setting is done

7. Limit position fine-tuning



8. Tilt angle adjustment (Special for Zebra blinds, Shangri-la blinds etc.)



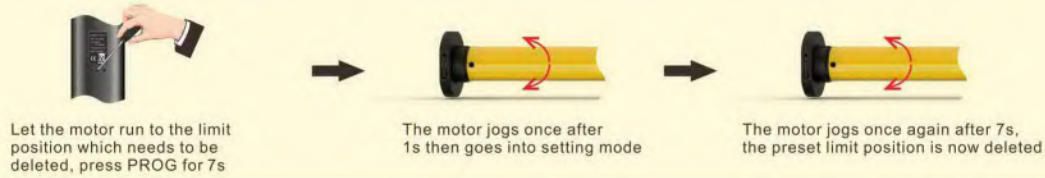
9. Jog movement & Continuous movement switching

* The default movement of the motor is continuous, can be changed to jog movement or back to continuous movement for blind positioning or during fine tuning mode. If APP control, it is continuous movement.



10. Delete Single Code

11. Delete the limit position



12. Reset motor * Make sure the interval between every actions less than 1s



13. Supplemental Instruction

- The first and second position are Upper/Lower limit positions. Other four are intermediate positions.
- After the Upper/Lower limit position are set, all the intermediate positions must be set between the Upper and Lower limit.
- The Upper and Lower limit position can only be fine-tuned once set. It can only be removed by resetting the motor.
- Press the UP or DOWN button once and the motor will move to the next pre-set limit position. When the upper position has been reached, the Up button will be unresponsive. When the lower position has been reached, the Down button will become unresponsive.
- Press and hold the UP or DOWN button until the indicator on the programmed channel flashes twice, release, then the motor will move to the Upper or Lower limit position without stopping at any intermediate position.
- If battery is low to 6.2V, red light will flash, motor will switch to jog mode. If low to 5.5V, motor will stop working.
- The light turns to red during recharging. It turns to green when it is full recharged.

IV. Trouble Shooting

Item	Problem	Matter	Shooting
1	The motor doesn't work and no any move	A. Power is cut off B. Shortage voltage protection C. Incorrect installation leads to motor sticking	A. Switch it on by button B. Start the motor after charging it for 6 hours C. Check and make sure all parts are installed properly
	The motor stops suddenly during operation	A. Shortage voltage protection B. Protect the motor when encounter obstacle	A. The motor will resume to work after being charged B. Check if there is something stuck or overloading